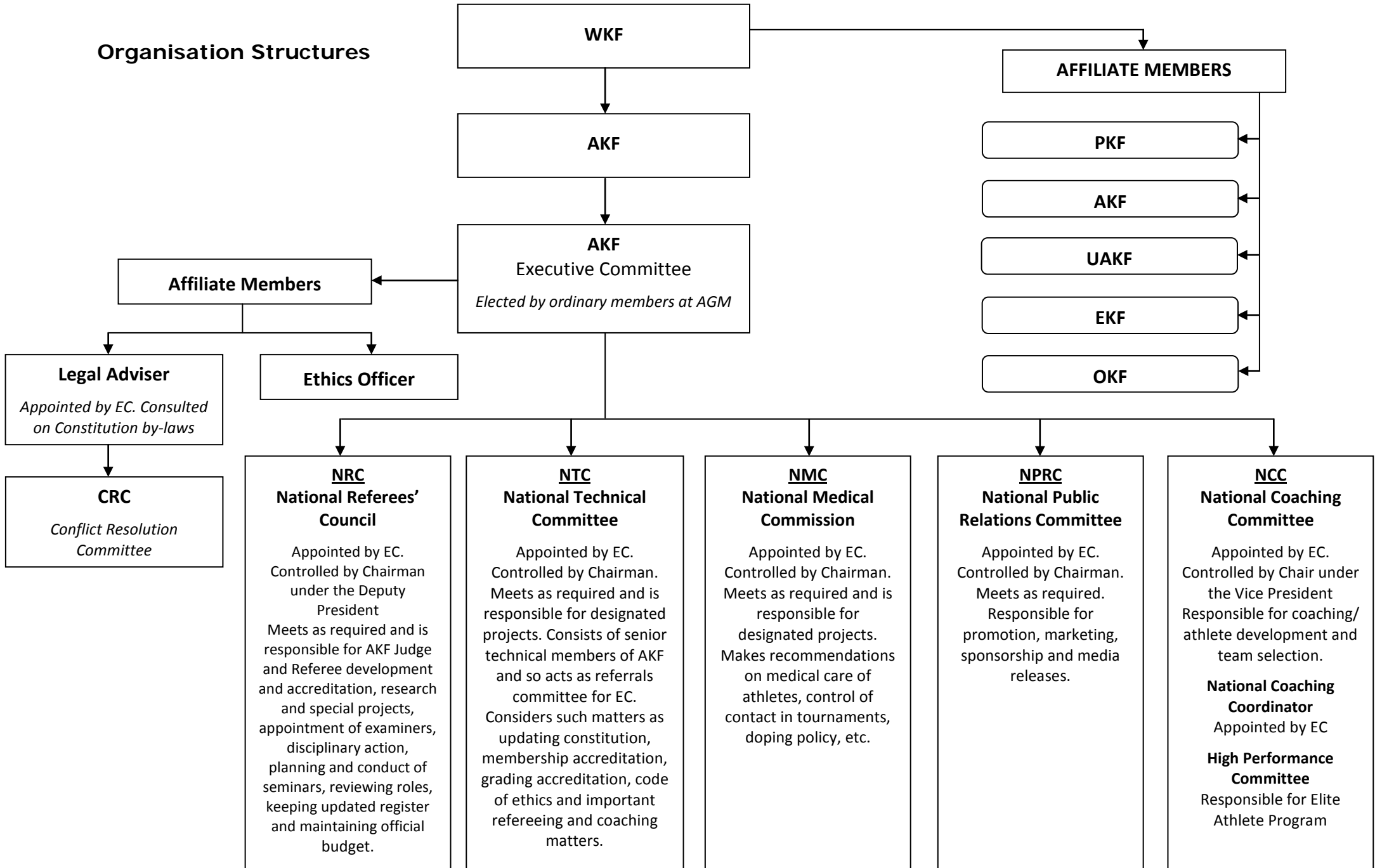
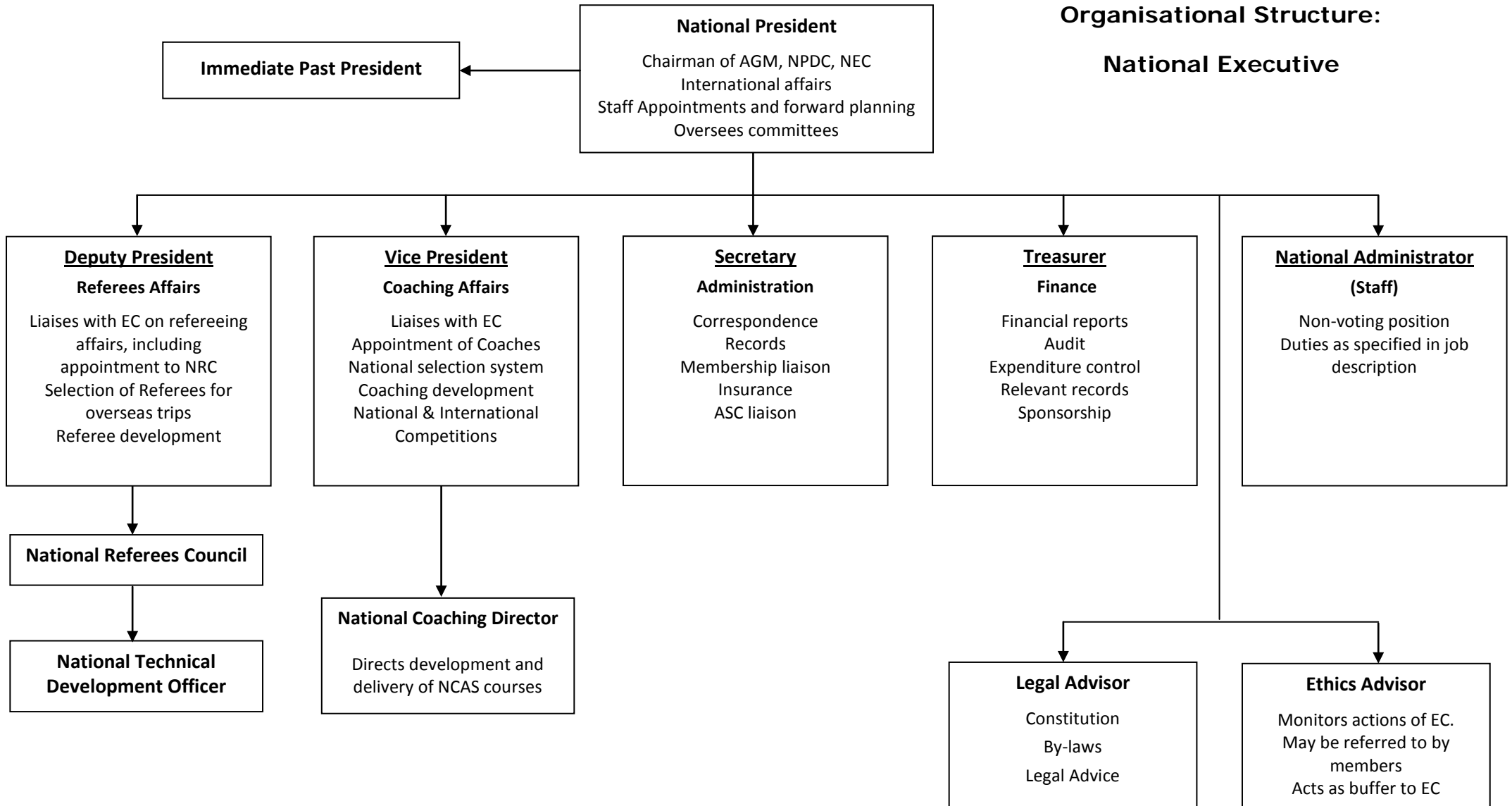


# Organisation Structures

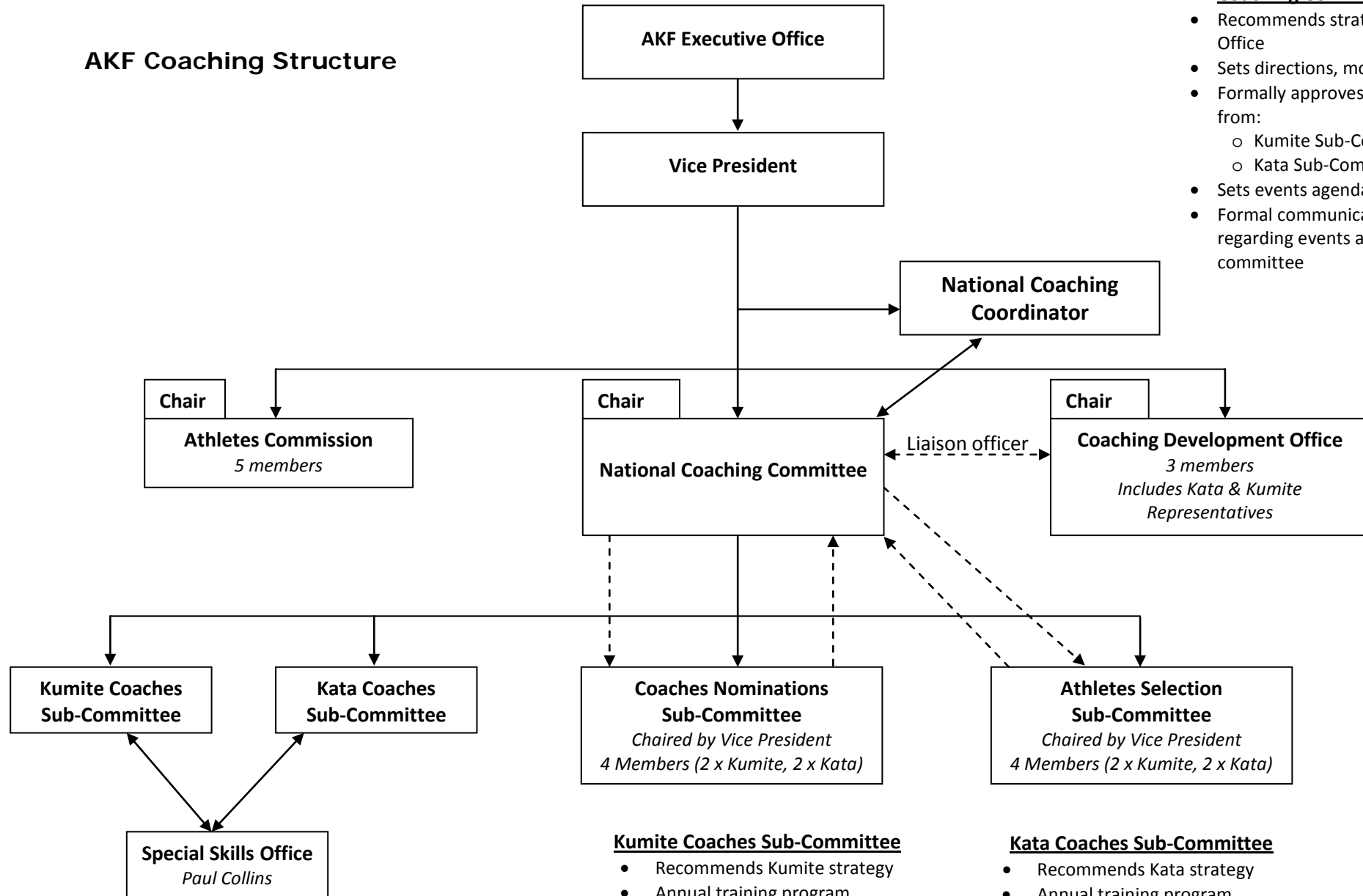


## Organisational Structure:

### National Executive



# AKF Coaching Structure



## Coaching Committee

- Recommends strategy to Executive Office
- Sets directions, monitors and controls
- Formally approves recommendations from:
  - Kumite Sub-Committee
  - Kata Sub-Committee
- Sets events agendas and programs
- Formal communication with athletes regarding events and decisions of the committee

## Kumite Coaches Sub-Committee

- Recommends Kumite strategy
- Annual training program
- Athletes minimum selection requirements
- Provides training & monitors progress
- Implements plan

## Kata Coaches Sub-Committee

- Recommends Kata strategy
- Annual training program
- Athletes minimum selection requirements
- Provides training & monitors progress
- Implements plan